

New Ball

$$TI = 2.2\%$$

$$Re = 1.44 \times 10^5$$

$$C_s = -0.14$$

New Ball

$$TI = 2.2\%$$

$$Re = 1.70 \times 10^5$$

$$C_s = -0.11$$

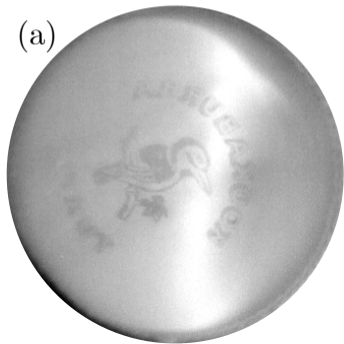
New Ball

$$TI = 2.2\%$$

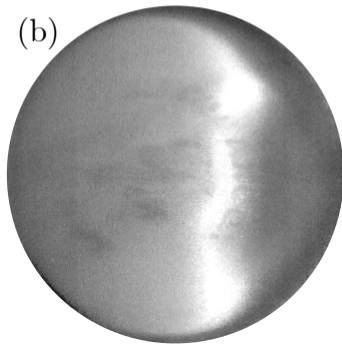
$$Re = 1.93 \times 10^5$$

$$C_s = -0.08$$

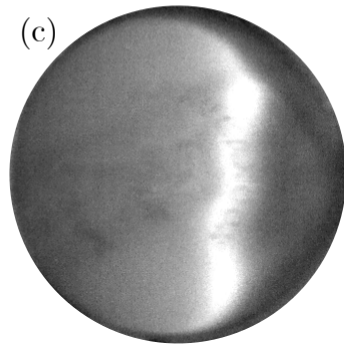
(a)



(b)



(c)



Non Seam Side